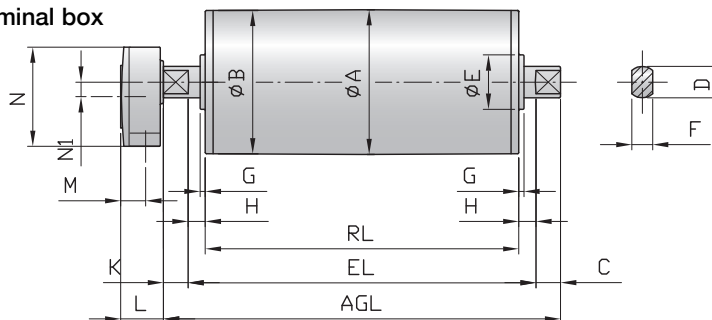
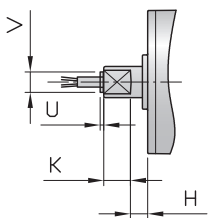


# Motorized Pulley 165E, Ø 165 mm

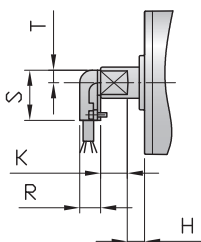
Motorized pulley with Terminal box



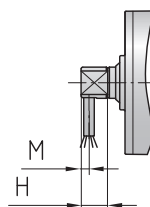
Straight connector



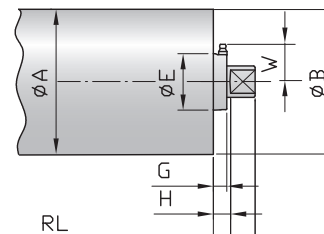
Elbow connector



Front shaft with cable slot



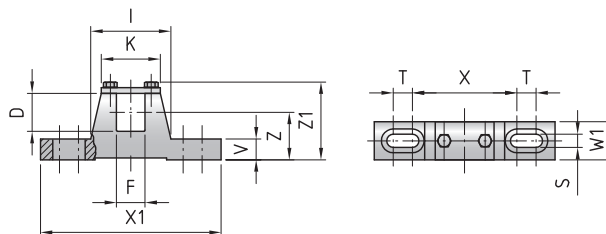
Idler pulley SS version



**Standard measurements**

Type / Option	Ref.	A mm	B mm	C mm	D mm	E mm	F mm	G mm	H mm	K mm	W mm	L mm	M mm	N mm	N1 mm	U mm	V mm	R mm	S mm	T mm	
165E (UT165E) / Terminal box		165	163.5	43.5	40	80	30	10	21.5	41.5	48	41	24	95	14						
SS version (regreasable seals)						64.5		13.5	21.5							4	27				
Straight connector									21.5	43.5						4	27				
Elbow connector									21.5	43.5								20	48	12	
Front shaft with cable slot										43.5			8-11								

Mounting brackets  
KL40



Motorized Pulley	Material	Dimensions												Weight kg
		D mm	F mm	I mm	K mm	S mm	T mm	V mm	W1 mm	X mm	X1 mm	Z mm	Z1 mm	
165E	Steel	40	30	84	62	14	20	22	40	110	190	50	83	2.1